

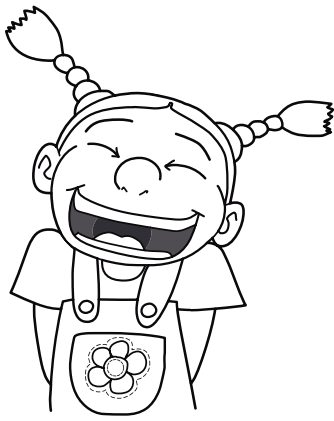
AMIGOS



FRIENDS



RockAlingua



Amigos

Simpático/a.

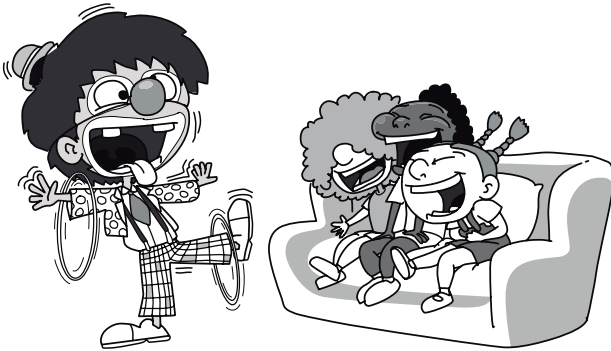
RockAlingua



Amigos

Antipático/a.
Gruñón

RockAlingua



Amigos

Divertido/a.

RockAlingua



Amigos

Aburrido/a.

RockAlingua



Amigos

Generoso/a.

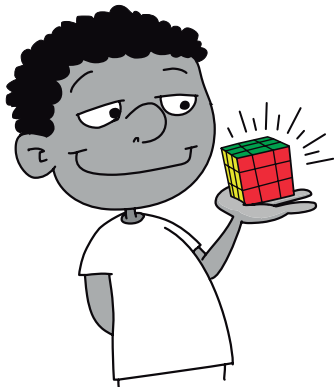
RockAlingua



Amigos

Egoísta.

RockAlingua



Amigos

Listo/a.
Inteligente.

RockAlingua



Amigos

Curioso/a.



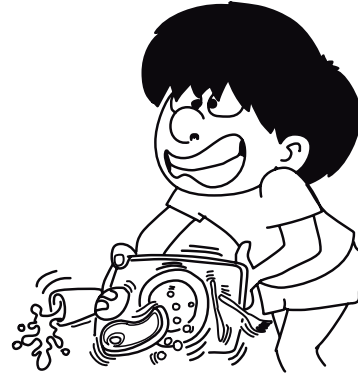
Trabajador/a.



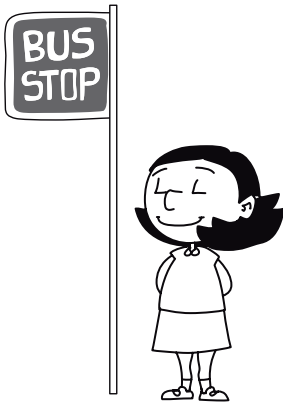
Vago/a.
Perezoso/a.



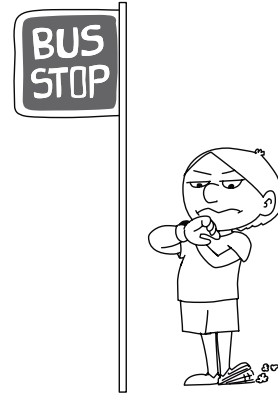
Hábil.
Ágil.



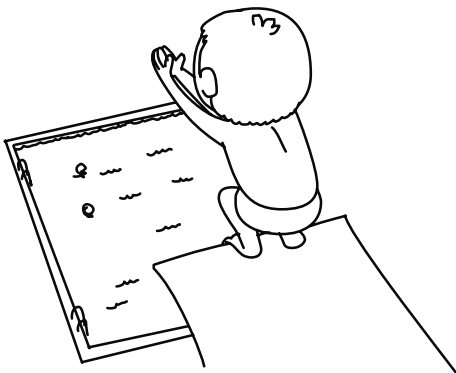
Torpe.



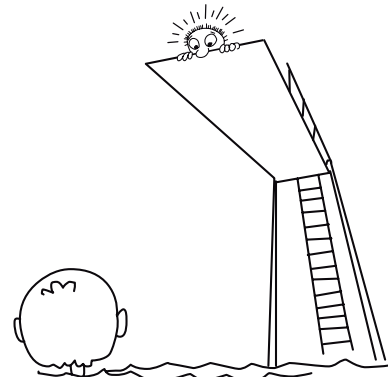
Paciente.



Impaciente.



Valiente.
Atrevido/a.



Miedoso/a.
Cobarde.

RockAlingua



Amigos

Tímido/a.

RockAlingua



Amigos

Sociable.

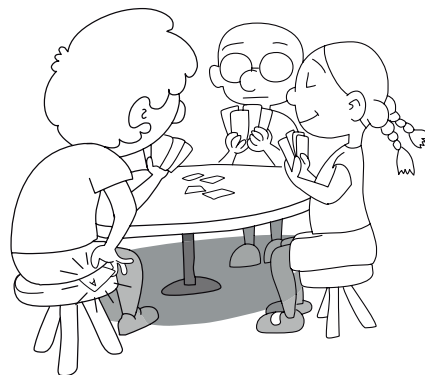
RockAlingua



Amigos

Honesto/a.
Honrado/a.

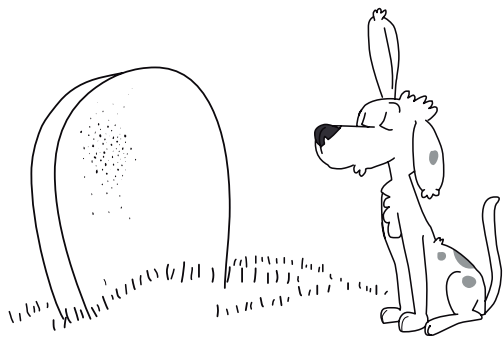
RockAlingua



Amigos

Deshonesto/a.
Tramposo/a.

RockAlingua



Amigos

Leal.
Fiel.

RockAlingua



Amigos

Mandón/a.

RockAlingua



Amigos

Ordenado/a.

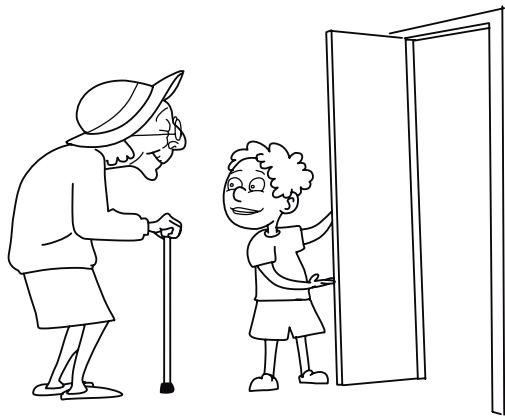
RockAlingua



Amigos

Desordenado/a.

RockAlingua



Amigos

Educado/a.

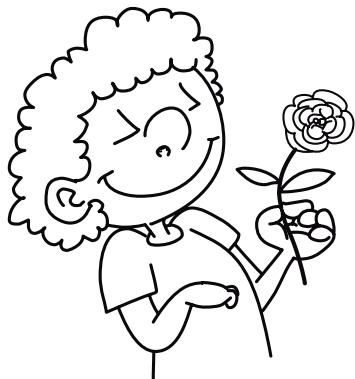
RockAlingua



Amigos

Mal educado/a.

RockAlingua



Amigos

Romántico/a.

RockAlingua



Amigos

Cabezón/a.
Terco/a.

RockAlingua



Amigos

Tranquilo/a.

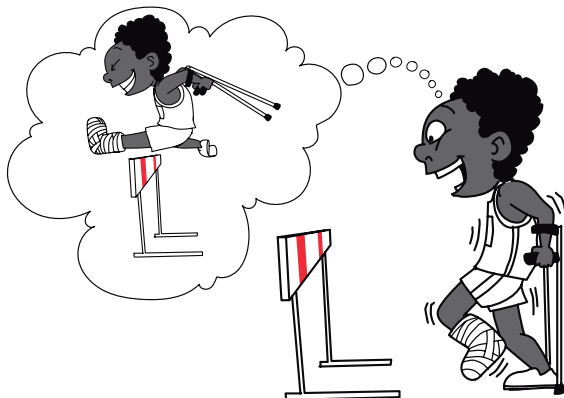
RockAlingua



Amigos

Inquieto/a.

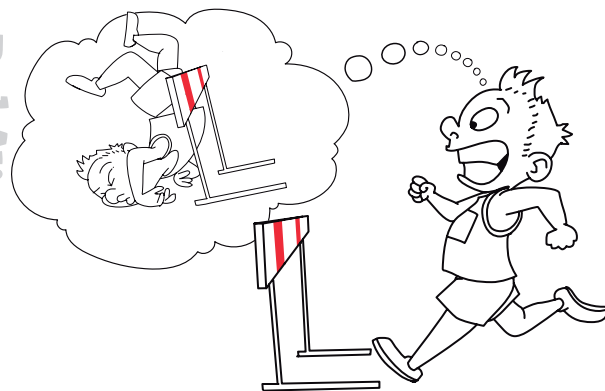
RockAlingua



Amigos

Optimista.

RockAlingua



Amigos

Pesimista.